



# HP

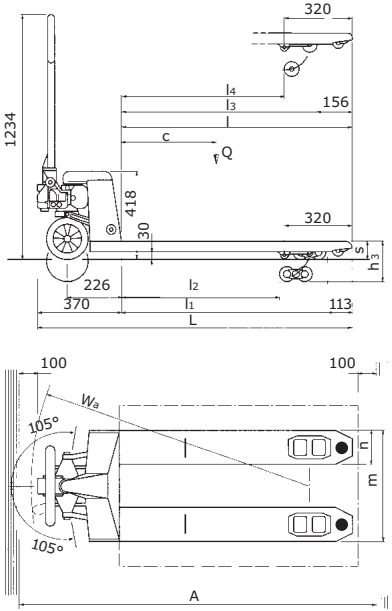
## Technical Data.

**Hand Pallet Trucks**  
**HP 22/30, HP 10X, HP 10XE.**

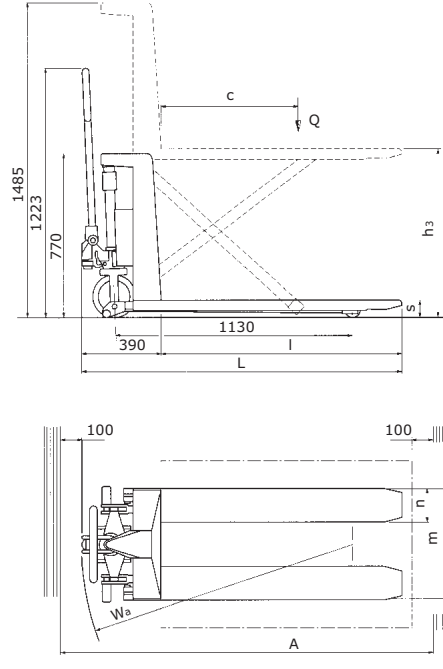
# Hand Pallet Trucks HP 22/30, HP 10X, HP 10XE.

This specification applies to the standard model only. Alternative tyres, ancillary equipment, etc. (if specified in the quote) could result in different values.

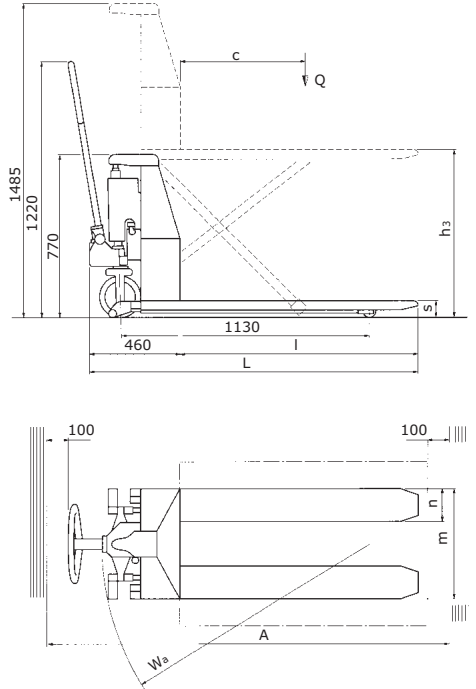
## HP 22



## HP 10X



## HP 10XE



Technical Data and Equipment	HP 22	HP 30	HP 10X	HP 10XE	
Manufacturer	STILL				
Q - Carrying capacity/load	kg	2200	3000	1000	1000*
Dead weight (with battery for HP 10XE 1000)	kg	51/54/58	115	140	183
l - Standard fork lengths	mm	795/950/1150	1200	1150	1150
c - Load centre	mm	400/500/600	600	600	600
l <sub>1</sub> /l <sub>2</sub> (Tandem load roller)	mm	682/451 837/606 1037/806	1026/795	-	-
l <sub>3</sub> /l <sub>4</sub> (Single load roller)	mm	639/495 794/650 999/850	-	-	-
L - Length of vehicle	mm	1165/1320/1520	1600	1543	1690
Wa - Turning radius	mm	978/1133/1333	1333	1495	1713
A - Operating width	mm	1425/1580/1780	1830	1862	2080
m - Width over forks	mm	520/680	540/680	540/680	540/680
n - Width of forks	mm	150	160	160	160
s/h <sub>3</sub> Lowered height/Lift height	mm	83/205	83/205	85/800	85/800
Guide wheels (N = nylon wheels, C = solid rubber tyres, A = steel wheels, V = vulkollan tyres)		N	V	C	C
Load-bearing roller (G = single load-bearing roller, (B = tandem load-bearing roller)		G	B	G	B
Special dimensions (l-m-n)	on request				
Parking brake	<input type="radio"/>	<input type="radio"/>	<input type="radio"/>	<input type="radio"/>	
Driving and parking brake Deadman brakes	<input type="radio"/>	<input type="radio"/>	-	-	
Fast lift pump	<input type="radio"/>	-	-	-	
Folding frame (height 65 to 255 mm)	<input type="radio"/>	on request	-	-	
Pallet stop (standard lengths 150-200-350 mm)	<input type="radio"/>	<input type="radio"/>	on request	-	
Side-support rollers	-	-	<input type="radio"/>	<input type="radio"/>	
Integral battery charger	-	-	-	<input checked="" type="radio"/>	

○ Optional ● Series equipment  
\* from h<sub>3</sub> 475 mm Q = 800 kg

---

The HP 10X and HP 10XE can be fitted with side support rollers to assist movement when the forks are raised.

Working with a bent posture and lifting heavy materials can endanger health. STILL scissor-lift models – HP 10X with hand-pump lift and HP 10XE with electro-hydraulic lift – can greatly reduce the effort required.

### **Weighing unit.**

With its inbuilt weighing unit, the HP 22/30 hand pallet truck can be used as a mobile weighing machine. A printer can be fitted to provide weight data printouts giving date and time.

### **High Safety Standards.**

Simply lowering the tow bar position will brake the truck – guaranteeing safety if the speed is too high, for instance on a gradient. After use, the tow bar returns automatically to the vertical position to reduce the risk of tripping. Closed design of tow bar grip protects the hands and also prevents its becoming caught in possible hindrances. 210° turning radius of the guide bar enables easy manoeuvring, even in the tightest spaces.

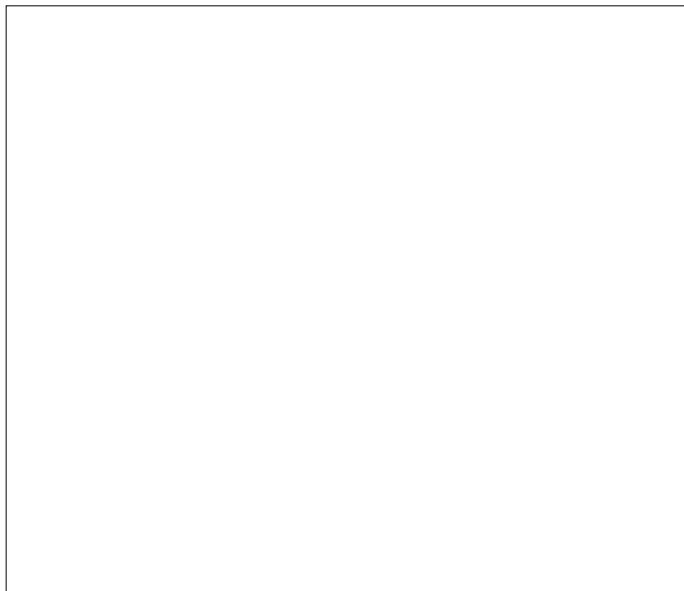
### **Safety.**

Operating and parking brakes are essential for safety when working on heavy goods vehicles, with load-side planking or inclined loading ramps. Foot-operated parking brakes can be provided as an alternative.

# Product Information

## Hand Pallet Trucks

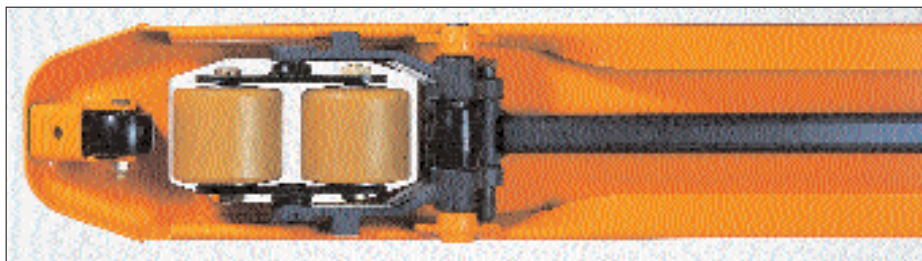
### Series HP 22.



#### Standard Equipment.

- Wheels or rollers manufactured from nylon, with low rolling friction
- Fork lengths for single load-bearing rollers optionally 795 mm, 950 mm or 1150 mm
- Truck width options: 530 mm or 540 mm
- Ergonomically designed STILL tow bar
- Turning radius 210°
- Compact lifting aggregate
- Entry and exit rollers
- Markings on the forks for use when picking up 800 mm deep pallets help to avoid damage to the pallets
- Depressions in the fork tips facilitate easier entry into the pallets

The pump piston is robustly protected against damage.  
A fast-lift unit can be provided at extra cost.



#### Wheels and Rollers.

Nylon guide and load-bearing wheels reduce rolling friction and protect against wear. Where rubber and vulkollan guide wheels are fitted, aluminium rims are provided to prevent corrosion. Entry and exit rollers with guide pieces under the fork tips assist pallet lifting on floorboards. Tandem load-bearing rollers support easy transfer on uneven floors, e.g. over transverse floor-boards.

#### Special Equipment.

- Guide wheels manufactured from rubber or polyurethane
  - Tandem load-bearing rollers
  - Polyurethane load-bearing rollers
  - Various fork lengths and widths
  - Special dimensions (e.g. for paper rolls, drums, casks etc.)
  - Guide wheels with foot parking brakes
  - High grade steel design
  - Folding frame
  - Scissor-lift trucks
  - Flame-proofed version
- Further special designs available on request.